



# WHO HQ® FOR YOU TRIVIA!

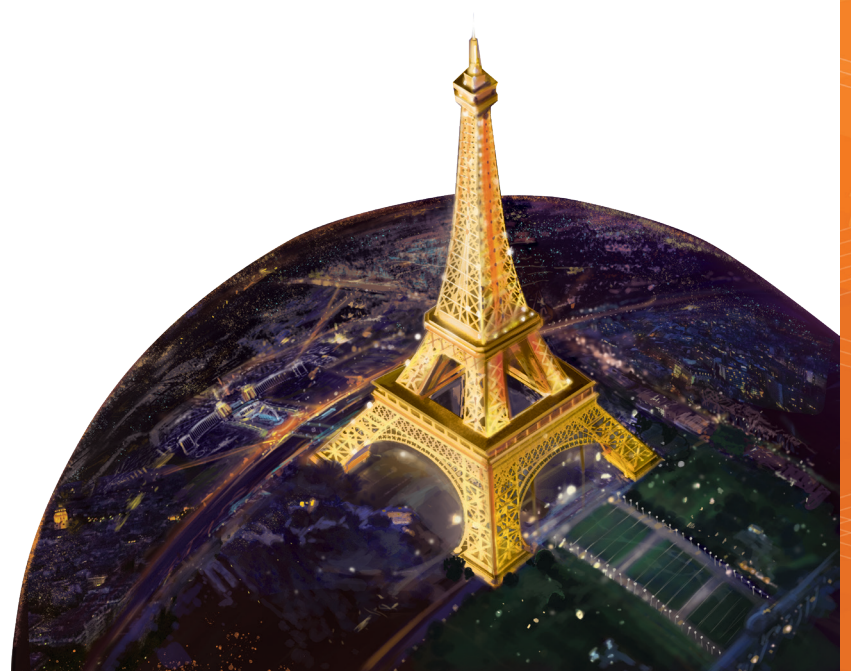


The correct answers are at the end of the activity so be careful not to let the answers slip!

## JUNE – DESTINATIONS & LANDMARKS:

1. In what city is Alcatraz located?
  - a. San Jose
  - b. San Francisco
  - c. San Diego
  - d. Tampa
2. Which former president made the Grand Canyon into a protected national park?
  - a. Ulysses S. Grant
  - b. Woodrow Wilson
  - c. Franklin D. Roosevelt
  - d. Harry S. Truman
3. What is the name of the river that flows right next to the Eiffel Tower?
  - a. The Danube
  - b. The Seine
  - c. The Volga
  - d. The Loire
4. How long did it take to build the Brooklyn Bridge?
  - a. 5 years
  - b. 11 years
  - c. 14 years
  - d. 17 years
5. Which state does the Mississippi River *not* flow through?
  - a. Indiana
  - b. Illinois
  - c. Louisiana
  - d. Iowa

6. The Vatican has secret church archives not available to the public. If you lined these archives up in a row, how long do you think the archives would be?
  - a. 10 miles long
  - b. 20 miles long
  - c. 40 miles long
  - d. 50 miles long
  
7. The Tower of London has taken on many different purposes. Which of the below is not one of the ways it was used:
  - a. A palace
  - b. A zoo
  - c. A factory
  - d. A fortress
  
8. In what year was the White House first built to completion? (special hint: it had to be rebuilt!)
  - A. 1749
  - B. 1776
  - C. 1800
  - D. 1812
  
9. Which famous sci-fi writer created the story behind the Spaceship Earth ride in Walt Disney World?
  - a. Octavia E. Butler
  - b. Ray Bradbury
  - c. Phillip K. Dick
  - d. Mary Shelley
  
10. Where is the Stonewall Inn located?
  - a. The Castro, San Francisco
  - b. Greenwich Village, New York City
  - c. Dupont Circle, Washington D.C.
  - d. Le Marais, Paris



ANSWERS: 1. B, 2. C, 3. B, 4. C, 5. A, 6. D, 7. C, 8. C, 9. B, 10. B