



# Famous Brain

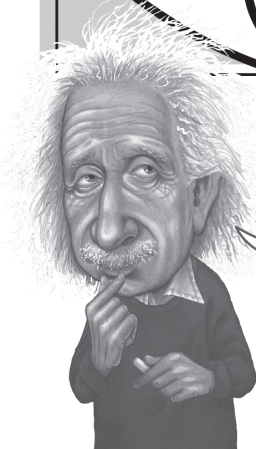
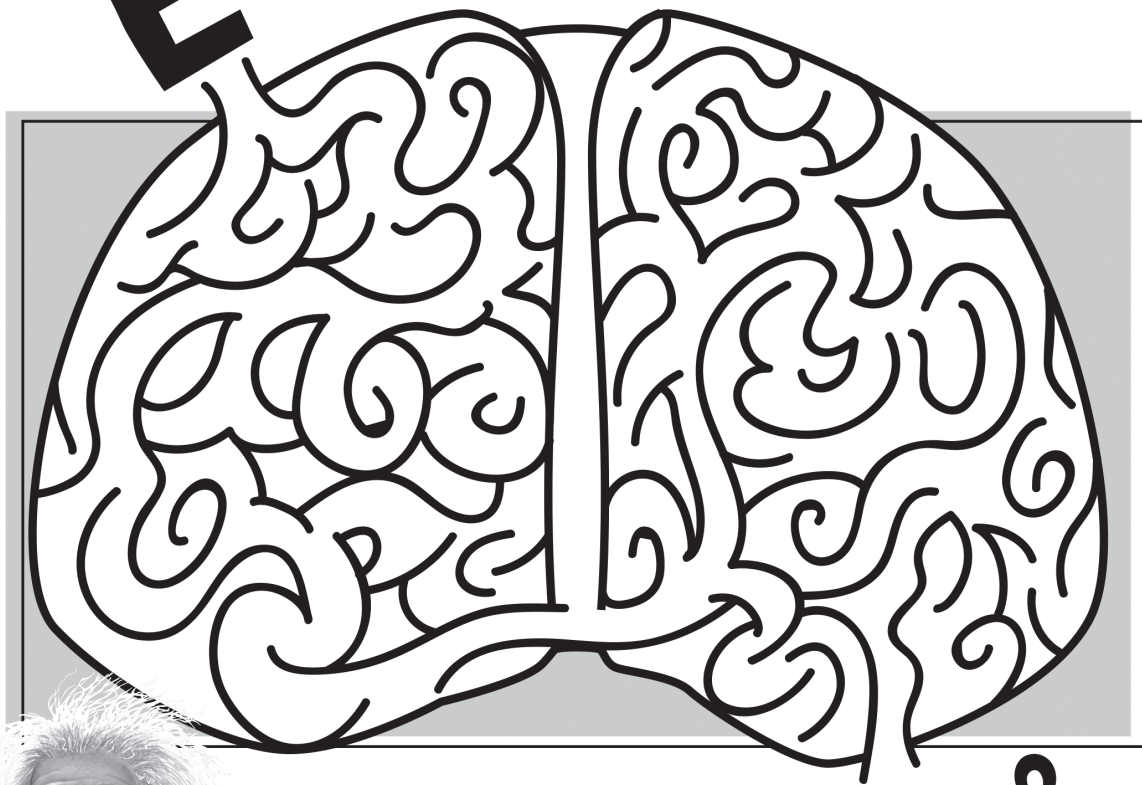
Albert Einstein was one of the greatest scientific minds in history. He began writing scientific essays when he was only a teenager and had his first paper published when he was twenty-two. He became a world-famous scientist. One interesting fact about him was that his brain weighed less than the average human brain.

**START!**

**E**

Solve this maze for the other half of Einstein's famous equation connecting mass and energy.

What does *E* equal?



IMAGINATION IS MORE IMPORTANT THAN KNOWLEDGE.

**MC<sup>2</sup>  
FINISH!**